



Overflow station SPU15/20

Overflow station SPU15/20 is designed for liquid carbon dioxide overflow from one tank into another.

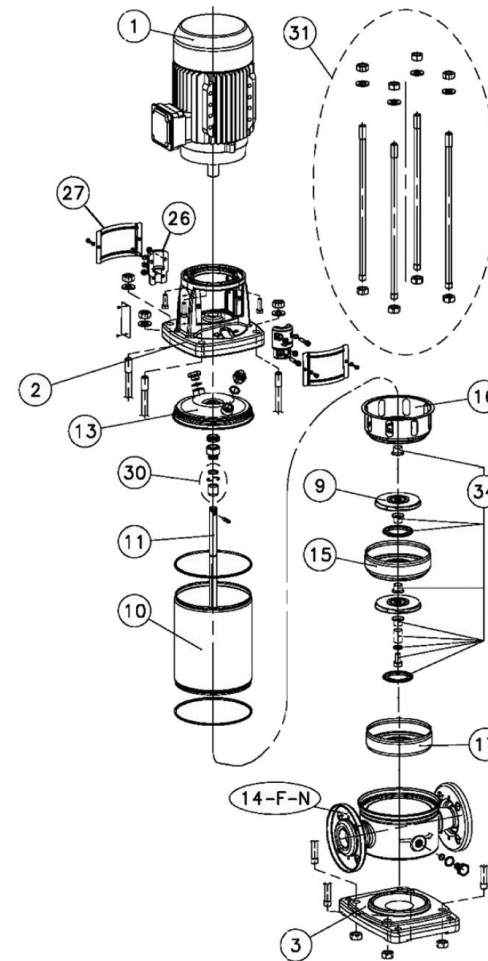
Two-stage centrifugal pump is used as a pumping unit of station.

Sealing of pump inner cavities consists of rubber O-ring and end seal located on drive shaft. Sealing is performed along the contact surface of silicized carbon – antifriction carbon material of increased wear resistance.



List of spare parts for centrifugal pump.

Pos.	Certification	Designation	Material
1.	2.2 kW, 3000 rpm	Electric motor	-
2.	-	Adapter	Cast iron
3.	-	Base plate	Cast iron
9.	150703640	Wheel	Steel
10.	-	Shell	Steel
11.	165051030	Shaft	Steel
13.	-	Upper stamped disc with connectors	Steel
15.	152803150	First stage diffuser	Steel
16.	152803050	Last stage diffuser	Steel
17.	-	Box of initial stage	Steel
26.	-	Set of half-couplings	Steel
27.	-	Protection of coupling	Steel
30.	KL41AAY KIT ARRESTO GIR	Set of sealing bushes	Steel
31.	-	Set of connecting rods	Steel
34.	KL35AEU	Set of wearing parts	Steel



Centrifugal pump. Order sheet of component parts.

Additional equipment

Metal hoses. The station is additionally equipped with bellows stainless metal hoses for connection with stationary reservoirs and transport tanks. Standard set of hoses include: two hoses DN32, P40, L2000 with nuts on heads Tr70x4 and flanges DN50 and one hose DN20, PN64, L3000 with nuts on heads Tr70x4.
Designation for order of non-standard hoses: diameter DN, pressure PN, length L and thread of nuts and type of flanges.

End seal made of antifriction carbon material with increased wear resistance with addition of babbitts. **Designation for order: End seal KD 23.00.00.03. Set of mating flanges (2 pcs.). Designation for order: Flange ex. 1 Dn50, st. 12X18H10T GOST 12820-80.**

Filter is used for liquid carbon dioxide cleaning from solid-state mechanical impurities, aerosol and condensed moisture, oil, and other impurities by mechanical method. Main technical characteristics of filter for liquid carbon dioxide cleaning are as follows:

- Operating pressure: PN = 2.5 MPa;
- Type of medium – liquid carbon dioxide;
- Recommended operating environment temperature: -40°...-20° C;
- Medium (gas) flow rate – not more than 3...5 m/s.
- Cutoff filtration rating - 80 micron.
- Rated filtering efficiency as per mechanical impurities – at least 99.0%;
- Maximum operating pressure drop on filter – not above 0.2 MPa.

Designation for order: filter FS 15/20.



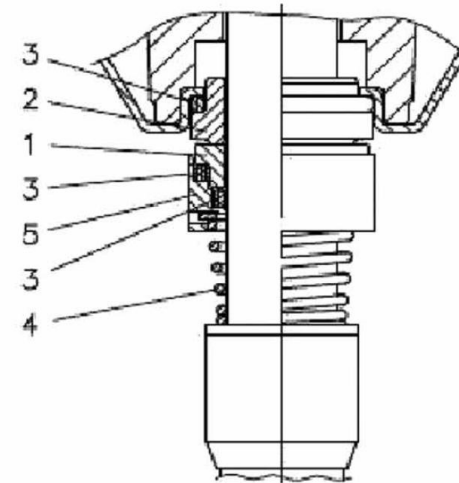
Additional service.

Installation of TsZhU-type transport tank into tambour.

Mounting of station purchased from our company on the Customer's tank is to be performed in the territory of our enterprise.

Designation for order: SPU15/20T.

Overhaul of centrifugal pump. Repair includes all necessary process operations, and the Customer will receive pump with operating technical characteristics and appearance of new pump. Repair possibilities and costs are determined after preparation of damage assessment acts on exchanger by our specialists.



Centrifugal pump. Unit of end seal.

Designation for order: Set of end seals KL01AAE.

1. Moving part, 2. Fixed part, 3. O-ring,
4. Spring, 5. Body of end seal.



SPTA* set.

(is included into the supply scope of station SPU15/20)

Pos.	Identification	Designation	Quantity
1.	-	Gasket Dn50	2
2.	-	Y-shaped gasket	1
3.	KD23.00.00.03	End seal (fixed part)	1

* While ordering SPTA set, it is necessary to specify its scope because it can be changed at the Manufacturer's discretion.